



ILLINOIS BOARD OF HIGHER EDUCATION

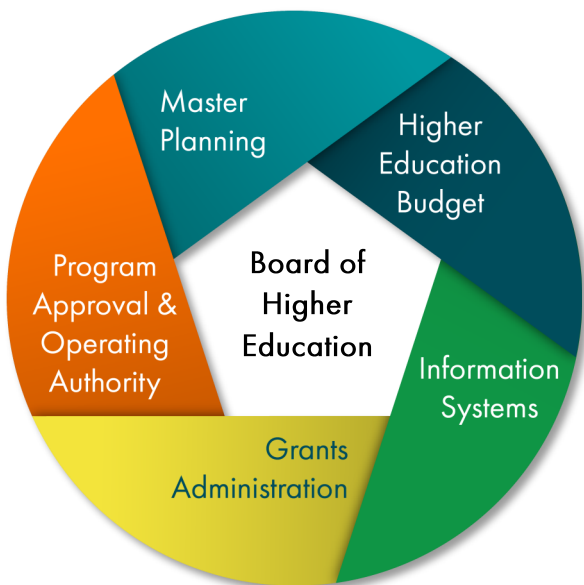
Annual Report
July 1, 2017 to June 30, 2018

JB Pritzker | Governor

Tom Cross | Board Chair

Mission

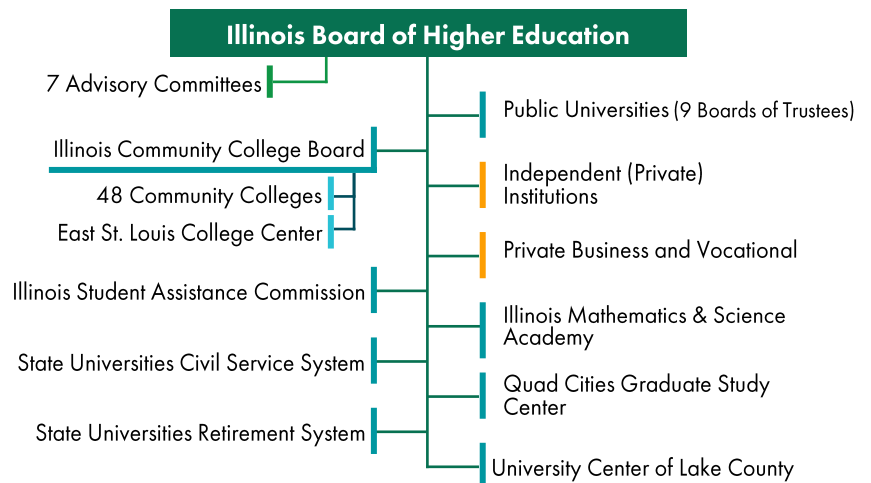
IBHE is responsible for planning and coordinating the state's system of higher education in five major areas:



Structure of Higher Education in Illinois

IBHE makes budget recommendations and grants operating authority and program approval for public higher education agencies and organizations and private institutions.

Legend: green is IBHE, blue denotes a public entity with a separate governing board, and orange indicates private institutions under IBHE authority.



Master Planning and Policy Development

IBHE carries out its planning and policy responsibilities in a variety of ways, including ad hoc study committees, special task forces, staff initiatives, and more.

In 2008 the Board approved the [Illinois Public Agenda for College and Career Success](#) and in 2013 commissioned a midpoint report, [“The Public Agenda: 5 Years Later.”](#) The midpoint report identified four key areas for improvement – affordability, gaps for underserved students, adult degree completion, and IBHE’s role as education advocate.

External and Legislative Relations

The Board and staff analyze legislation, respond to inquiries from legislators, meet with higher education committees, and coordinate activities with legislative liaisons from other higher education agencies, institutions, and organizations.

FY18 legislative initiatives enacted include: [P.A. 100-43](#) – changes to the Illinois Procurement Code which will positively impact higher education institutions; [P.A. 100-167](#) – miscellaneous changes to update the Board of Higher Education Act; and [P.A. 100-417](#) – allows ICCB and IBHE to collect a fee to cover the cost of processing and handling individual student-level data requests. Other bills impacting IBHE: [P.A. 100-195](#) – requires higher education institutions to adopt and submit policies to award credit for military training to IBHE and ICCB - further, requires IBHE to collect data in HEIS on students who are veterans or have military service to assess enrollment and completions outcomes; [P.A. 100-261](#) – requires public universities to submit policies and procedures for students to earn credit for prior learning to IBHE; and [HJR 2](#) – creates the Underrepresented Groups in Academia Task Force within IBHE. The Board responded to media requests. External Relations staff also support IBHE’s [Student Advisory Committee](#).

Diversity and Outreach

Diversity and Outreach staff work with external organizations that advocate for diversity in higher education, student veterans, and other underserved communities.

Board staff provided administrative support for the [Diversifying Higher Education Faculty in Illinois](#) program, which aims to improve minority faculty representation through financial assistance.

IBHE issued the following annual reports in FY18:

- [Underrepresented Groups in Illinois Higher Education](#)
- [Illinois African American Employment Plan for Public Universities](#)
- [Illinois Asian-American Employment Plan for Public Universities](#)
- [Illinois Hispanic Employment Plan for Public Universities](#)

Military Prior Learning Assessment Task Force

Through [PA 99-395](#), the Illinois General Assembly appointed IBHE to create a [Military Prior Learning Assessment \(MPLA\) Task Force](#), which would study and make recommendations on implementing military learning for academic credit.

The Military Prior Learning Assessment Task Force convened in February 2016 and [issued its report in December](#). Pursuant to [PA 99-395](#), the purpose of the task force is to make recommendations on how to best recognize military learning for academic credit, industry-recognized credentials, and college degrees through the use of the Prior Learning Assessment. The task force will integrate Multi-State Collaborative on Military Credit work into state efforts.

Academic Affairs and Program Review

The Board develops and implements academic policies for Illinois higher education by reviewing/authorizing new postsecondary programs and institutions. Academic Affairs staff also lead/participate in a variety of state and national higher education initiatives. Staff also administer the [IBHE student complaint system](#), serving all Illinois students.

In FY18 the Degree-Granting Unit oversaw **18 new degree programs** at public universities, **14** at community colleges, and **93** at private institutions; **3 new institutes, departments, or schools** at public universities; and **20 new authorizations** for operating authority.

The Private Business and Vocational Schools Unit approved **112 new programs of study**, **35 new permits**, and **134 renewals** and processed **874 transcript requests**.

Staff also closed **98** student complaints.

In FY18 Academic Affairs staff were involved with:

- [Illinois Articulation Initiative](#) and [Distance Education](#)
- Complete College America's Co-requisite at Scale Initiative
- Multi-State Collaborative on Military Credit
- Governor's Office of Early Childhood Development grants
- [State Authorization Reciprocity Agreement \(SARA\)](#)
- Academic program review of low-producing programs
- [Dual Credit Authorization and Compliance](#)
- Educator and school leader preparation

Additional activities include high school to college transition and dual credit, Illinois learning standards, career pathways, completion initiatives, stackable credentials, competency-based education, and workforce development initiatives.

Budget and Fiscal Affairs

Budget staff work with the higher education institutions and agencies to develop a [comprehensive higher education budget recommendation](#) (including operational and capital funding) for the Governor and legislature. Fiscal staff also prepare several annual reports.

In FY19, **\$1.894 billion** was appropriated from general funds for higher educational institutional operations and grants. The Illinois public universities received **\$1.1 billion**, community colleges **\$268 million**, adult education/postsecondary career and technical education programs **\$51.3 million**, Illinois Student Assistance Commission **\$439 million** (which includes funding for the Monetary Award Program), the Illinois Math and Science Academy **\$18.4 million**; the State Universities Civil Service System **\$1.1 million**; IBHE **\$2.8 million**; and IBHE institutional grants and special Initiatives **\$7.3 million**. In addition, the State University Retirement System received **\$1.37 billion** from general funds and **\$215 million** from the state pension fund.

IBHE issued the following annual reports for FY18:

- [Higher Education Veterans Service Act](#)
- [Public University Tuition and Fee Waivers](#)
- [Revenues and Expenditures](#)
- [Compensable Sick Leave](#)

Information Management and Research

The Board has a statutory responsibility to establish a comprehensive, meaningful, and timely system of information about higher education in Illinois by collecting data from public and private institutions.

Information gathered in FY18 include student demographics, institution-specific enrollment and degree completions, faculty and staff information, financial aid, cost to students, expenditures, and academic program costs. This information is made available to the public via reports and dynamic web applications. IM&R staff also advanced work on the Illinois Higher Education Information System and developed tools to track students from school to workforce as well as a statewide Community College Feedback Report. IM&R staff prepared [IBHE DataPoints](#) summarizing useful data reports on Illinois higher education.

Board Members, Committees, and Meetings

The Board is comprised of 16 members. A variety of committees advise and advance the Board's work. The Board holds six meetings each year with occasional special meetings as needed.

Student Board members are selected by the Student Advisory Committee; all other members, including the Chair, are appointed by the Governor.

FY18 Board Members

- Tom Cross, Chair*
- Jane Hays, Vice-Chair and Public Member*
- Jay D. Bergman, Public Member*
- Max Coffey, Public Member*
- Meredith Dow, Private Universities Representative*
- Sherry Eagle, Representative of Public Universities*
- Alice Marie Jacobs, Public Member*
- Cherilyn Murer, Public Member*
- Santos Rivera, Public Member*
- Darlene Ruscitti, Public Member*
- Jack Thomas, Public Member*
- Christine Wiseman, Private Universities Representative
- Natalie Pieper, Student Member*
- Akya Gossitt, Nontraditional Student Member*
- John Bambenek, *ex officio*, ICCB*
- Eric Zarnikow, *ex officio*, ISAC*

*Denotes Board members at the end of FY18

Advisory Committees and Chairs

- Community College Presidents, Lori Sundberg
- Disabilities Advisory Committee, Carrie Pierson
- Faculty Advisory Council, Marie Donovan
- Private University Presidents, Dave Tretter
- Proprietary Advisory Committee, Robert Gabriel
- Public University Presidents and Chancellors, Larry Dietz
- Student Advisory Committee, Erin Fleshren

FY18 Board Meetings

- Sept. 19 Western Illinois University, Macomb
- Nov. 31** Videoconference, Springfield and Chicago
- Dec. 12 Illinois Mathematics & Science Academy, Aurora
- Feb. 6** Videoconference, Springfield and Chicago
- Mar. 13 Quincy University, Quincy
- June 5 University Center of Lake County, Grayslake

**Denotes special Board meeting

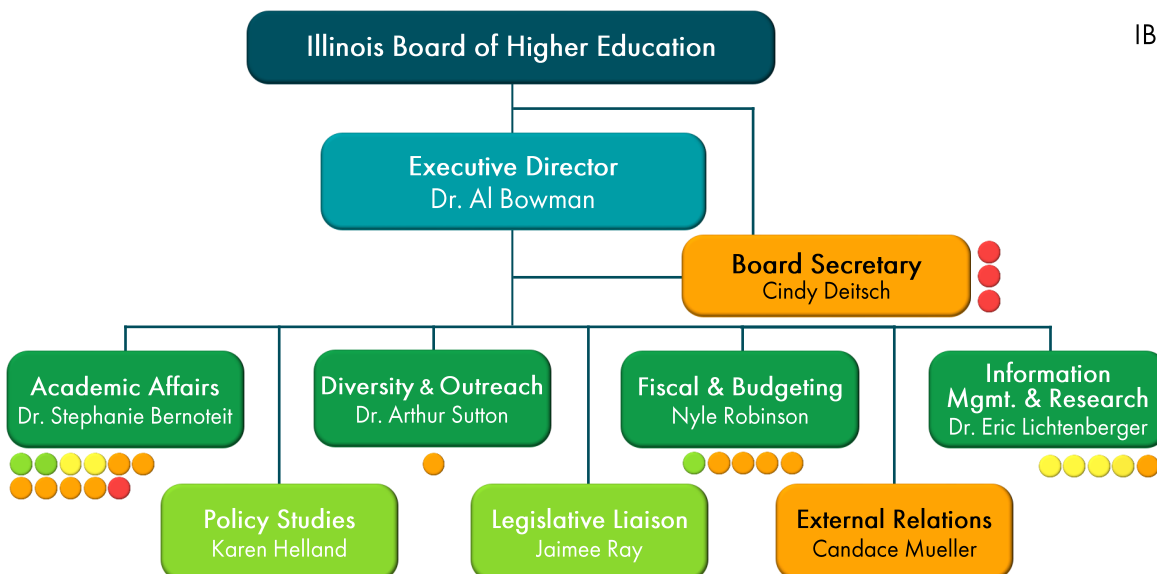
All meetings are conducted in accordance with the Open Meetings Act [5 ILCS 120].

IBHE Staff

IBHE staff support the Board and execute its direction.

IBHE Organizational Chart

At the end of FY18, IBHE had 34 employees.



Legend:

- Executive Director
- Deputy Director
- Senior Assoc. Dir.
- Associate Director
- Assistant Director
- Support Staff